

8951

Research Dr., Suite 100 Irvine, CA

THE MAYER CORPORATION

KIER+WRIGHT

OFFICE For Lease

NAICapital
COMMERCIAL REAL ESTATE SERVICES WORLDWIDE



8951

Research Dr., Suite 100 Irvine, CA

Property Description

Situated on Research Drive in one of Irvine's most prestigious business parks, this beautiful 4,950 SF first floor office suite is now available for lease! The property features a large board room, six private offices, private restrooms/shower, built in lower cabinet storage, private kitchen, floor to ceiling windows, and ample natural light. The Brenexus Limited Edition office park is surrounded by a bustling community, including several business parks, residential areas, and high traffic amenities. It is centrally located with close proximity to the Irvine Spectrum, John Wayne Airport, and Los Olivos Marketplace. With immediate access to the 405/5/133 freeways, it is the perfect location for your clients and employees commuting from various locations!

For more information:

John Manion

Executive Vice President
jmanion@naicapital.com
949.207.6424
Cal DRE License #01247695



*Several Amenities
Within Walking
Distance*



*Convenient Access
to the 5, 55, 405
and 241 Freeway/
Toll Road*



First Floor Suite



Large Board Room



Six Private Offices



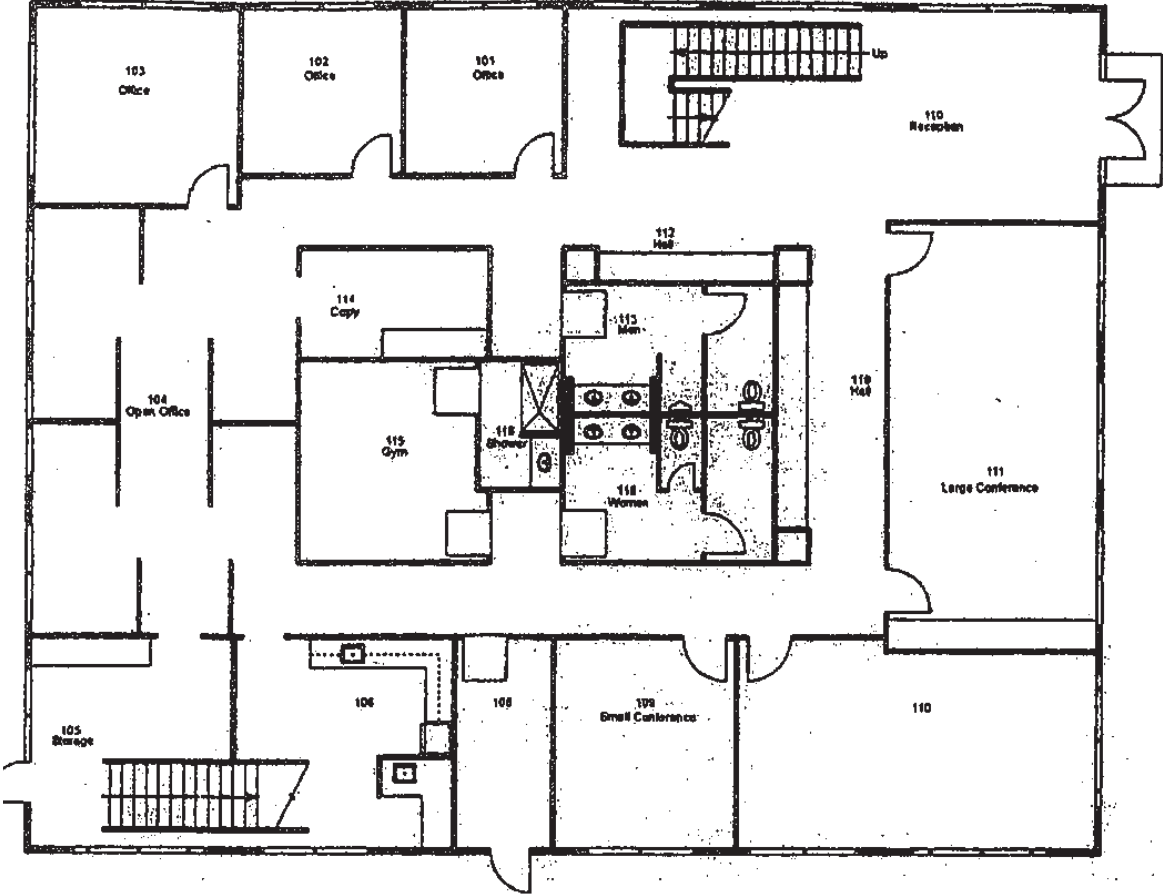
Private Restrooms



3.5:1 Parking



8951
Research Dr., Suite 100 Irvine, CA



FIRST FLOOR



BANK OF AMERICA
PAPA JOHN'S
Jack
in the box
SUBWAY

7
ELEVEN
ISLANDS
Five Burgers & Drinks

GREAT PARK
IRVINE, CALIFORNIA

Domino's
Pizza

BEST BUY
SUBWAY
McDonald's

COCO'S
Bakery Restaurant
GREEN BURRITOS
at Carls Jr.

McDonald's

IHOP
Panera
BREAD
at&t
BUFFALO WILD WINGS
THE GOLD FLAME

us bank
SUBWAY
TACO BELL

Jack
in the box

McDonald's

8951
RESEARCH DR
IRVINE CA

JOHN WAYNE
AIRPORT
ORANGE COUNTY
9 MILES FROM SITE

LOS OLIVOS
MARKETPLACE
IRVINE SPECTRUM
IRVINE
SPECTRUM
CENTER

RESEARCH DR

SCIENTIFIC WAY

LAKE FOREST DR

MOULTON PKWY

IRVINE

RIDGE ROUTE DR



8951

Research Dr., Suite 100 Irvine, CA

OFFICE For Lease

For more information,
please contact:

John Manion

Executive Vice President

jmanion@naicapital.com | 949.207.6424

Cal DRE License #01247695

NAI Capital
COMMERCIAL REAL ESTATE SERVICES, WORLDWIDE

No warranty, express or implied, is made as to the accuracy of the information contained herein. This information is submitted subject to errors, omissions, change of price, rental or other conditions, withdrawal without notice, and is subject to any special listing conditions imposed by our principals, cooperating brokers, buyers, tenants and other parties who receive this document should not rely on it, but should use it as a starting point of analysis, and should independently confirm the accuracy of the information contained herein through a due diligence review of the books, records, files and documents that constitute reliable sources of the information described herein. NAI Capital Cal DRE #02130474